

Rotating Eye Lifting Point RELP

The Gunnebo Industries lifting point range provide a solution for every lifting and rigging operation, enabling improved operational efficiency. To choose the right lifting point for an operation can be a challenge, since most lifting points can be used for several purposes. Safety is our highest priority, therefore has each sold RELP been proof loaded 2.5 times the WLL.

The Rotating Eye Lifting Point (RELP) is a compact and robust lifting point, ideal for top-mounting and when a quick and easy on-hooking is important. The bolt has a hexagon socket which makes it easy to mount and dismount using a standard allen key. The RELP automatically adjust to the loading direction which decreases the risk to load it incorrectly and endangering the lifting operation. For sensitive load surfaces the RELP is ideal, as the connecting sling hook will be positioned mainly parallel to the load surface; completely avoiding the hook to cause damage on the load.

Significantly stronger than a DIN 580 eye bolt

- The RELP has several times higher WLL than a DIN 580 eye bolt.
- The same load can be lifted with a smaller size of RELP.

Safe mounting

- Safe mounting using standard allen key.
- Seats perfectly to the surface.

Automatic adjustment to loading direction

- Eliminate risk of unintended loosening.
- Decreases the risk of incorrect loading.

Compact & robust

- Ideal for top-mounting.
- Ideal when a quick and easy on-hooking is important.
- Ideal for sensitive load surfaces.

Applications where the RELP is perfectly suited

✓ Tight space

In many cases the RELP is attached where space is very limited, be it in a corner, in between components or on an edge. The RELP is designed take up very little space to avoid hanging over the edge or touching other parts than the base of which it is attached.

✓ Single part lift

The RELP is ideal for single part lift as the WLL is significantly higher when lifting vertically. The RELP is perfectly balanced and stable which makes handling the load easy and safe.

✓ Limited height

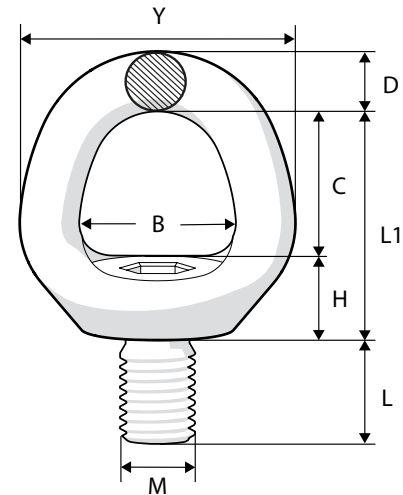
In lifts where every centimetre of height counts the RELP lifting point excels. Thanks to the compact design you can be sure that you will optimise the total sling length.

Example of typical applications

- Various OEM applications.
- For replacement of gearbox for conveyor in cement factory.
- Assembly of railway bogies.
- Pump installation in large sewage station.
- Automobile assembly line.
- Handling of electric engines.

Rotating Eye Lifting Point RELP

| Art. no. | Code | Dimensions in mm | | | | | | | | Weight kgs |
|----------|-----------------|------------------|----|----|----|----|-----|----|-----|---------------|
| | | B | C | D | H | L | L1 | M | Y | |
| Z102408 | RELP-M8 x 1.25 | 28 | 28 | 11 | 14 | 15 | 42 | 8 | 50 | 0.2 |
| Z102410 | RELP-M10 x 1.5 | 28 | 28 | 11 | 14 | 15 | 42 | 10 | 50 | 0.2 |
| Z102412 | RELP-M12 x 1.75 | 32 | 33 | 13 | 13 | 20 | 47 | 12 | 58 | 0.3 |
| Z102416 | RELP-M16 x 2 | 39 | 41 | 15 | 16 | 24 | 57 | 16 | 70 | 0.5 |
| Z102420 | RELP-M20 x 2.5 | 42 | 43 | 16 | 18 | 30 | 60 | 20 | 78 | 0.7 |
| Z102424 | RELP-M24 x 3 | 50 | 51 | 19 | 20 | 36 | 71 | 24 | 88 | 1.1 |
| Z102430 | RELP-M30 x 3.5 | 60 | 62 | 26 | 28 | 45 | 90 | 30 | 112 | 2.4 |
| Z102436 | RELP-M36 x 4 | 72 | 72 | 32 | 32 | 54 | 104 | 36 | 136 | 4.1 |
| Z102442 | RELP-M42 x 4.5 | 82 | 82 | 38 | 37 | 63 | 119 | 42 | 158 | 6.7 |
| Z102448 | RELP-M48 x 5 | 94 | 96 | 43 | 39 | 72 | 135 | 48 | 180 | 9.9 |

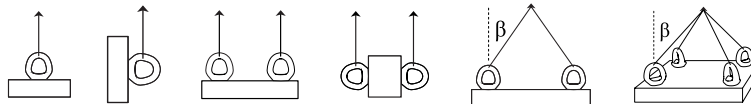


RELP with UNC thread

| Art. no. | Code | Dimensions in m | | | | | | | | M inch | Weight kgs |
|----------|-------------------|-----------------|----|----|----|----|-----|-----|--------|-----------|---------------|
| | | B | C | D | H | L | L1 | Y | | | |
| Z102508 | RELP 5/16"-18 UNC | 28 | 28 | 11 | 14 | 15 | 42 | 50 | 5/16" | 0.2 | |
| Z102510 | RELP 3/8"-16 UNC | 28 | 28 | 11 | 14 | 15 | 42 | 50 | 3/8" | 0.2 | |
| Z102512 | RELP 1/2"-13 UNC | 32 | 33 | 13 | 13 | 20 | 47 | 58 | 1/2" | 0.3 | |
| Z102516 | RELP 5/8"-11 UNC | 39 | 41 | 15 | 16 | 24 | 57 | 70 | 5/8" | 0.5 | |
| Z102520 | RELP 3/4"-10 UNC | 42 | 43 | 16 | 18 | 30 | 60 | 78 | 3/4" | 0.7 | |
| Z102521 | RELP 7/8"-9 UNC | 42 | 43 | 16 | 18 | 30 | 60 | 78 | 7/8" | 0.7 | |
| Z102524 | RELP 1"-8 UNC | 50 | 51 | 19 | 20 | 36 | 71 | 88 | 1" | 1.1 | |
| Z102530 | RELP 1 1/4"-7 UNC | 60 | 62 | 26 | 28 | 45 | 90 | 112 | 1 1/4" | 2.4 | |
| Z102536 | RELP 1 1/2"-6 UNC | 72 | 72 | 32 | 32 | 54 | 104 | 136 | 1 1/2" | 4.1 | |
| Z102542 | RELP 1 3/4"-5 UNC | 82 | 82 | 38 | 37 | 63 | 119 | 158 | 1 3/4" | 6.8 | |
| Z102548 | RELP 2"-4.5 UNC | 94 | 96 | 43 | 39 | 72 | 135 | 180 | 2" | 10.0 | |

Working Load Limits* - RELP

Symmetric Load
(tonnes)



| No. of legs | 1 | 1 | 2 | 2 | 2 symmetric | | 3 & 4 symmetric | | Tightening torque | Allen key |
|---|------|------|------|------|-------------|--------|-----------------|--------|----------------------|---------------|
| Angle β | 0° | 90° | 0° | 90° | 0-45° | 45-60° | 0-45° | 45-60° | | |
| RELP -M8 x 1.25 RELP 5/16"-18 UNC | 0.7 | 0.3 | 1.4 | 0.6 | 0.4 | 0.3 | 0.6 | 0.4 | 10 Nm 7 Ft.Lbs | 8 mm 5/16" |
| RELP -M10 x 1.5 RELP 3/8"-16 UNC | 1.2 | 0.5 | 2.4 | 1.0 | 0.7 | 0.5 | 1.0 | 0.7 | 15 Nm 11 Ft.Lbs | 8 mm 5/16" |
| RELP -M12 x 1.75 RELP 1/2"-13 UNC | 2.0 | 0.8 | 4.0 | 1.6 | 1.1 | 0.8 | 1.6 | 1.2 | 27 Nm 20 Ft.Lbs | 8 mm 5/16" |
| RELP -M16 x 2 RELP 5/8"-11 UNC | 3.5 | 1.5 | 7.0 | 3.0 | 2.1 | 1.5 | 3.1 | 2.2 | 60 Nm 44 Ft.Lbs | 8 mm 5/16" |
| RELP -M20 x 2.5 RELP 3/4"-10 UNC | 6.1 | 2.4 | 12.2 | 4.8 | 3.3 | 2.4 | 5.0 | 3.6 | 90 Nm 66 Ft.Lbs | 8 mm 5/16" |
| RELP -M24 x 3 RELP 1"-8 UNC | 8.1 | 3.3 | 16.2 | 6.6 | 4.6 | 3.3 | 6.9 | 4.9 | 135 Nm 100 Ft.Lbs | 19 mm 3/4" |
| RELP -M30 x 3.5 RELP 1 1/4"-7 UNC | 12.1 | 4.6 | 24.2 | 9.2 | 6.4 | 4.6 | 9.6 | 6.9 | 270 Nm 200 Ft.Lbs | 19 mm 3/4" |
| RELP -M36 x 4 RELP 1 1/2"-6 UNC | 16.1 | 7.1 | 32.2 | 14.2 | 9.9 | 7.1 | 14.9 | 10.6 | 320 Nm 236 Ft.Lbs | 19 mm 3/4" |
| RELP -M42 x 4.5 RELP 1 3/4"-5 UNC | 24 | 9.1 | 48 | 18.2 | 12.7 | 9.1 | 19.1 | 13.6 | 600 Nm 440 Ft.Lbs | 19 mm 3/4" |
| RELP -M48 x 5 RELP 2"-4.5 UNC | 32 | 12.1 | 64 | 24.2 | 16.9 | 12.1 | 25.4 | 18.1 | 800 Nm 590 Ft.Lbs | 19 mm 3/4" |

* Safety factor 4:1